



IEMA

The Institute of Environmental
Management & Assessment

IEMA is the professional membership body for individuals and organisations looking to make a real, meaningful difference to world we share.

- 17,000+ members
- ... in more than 116 countries
- ...more than 235 corporate partners

We provide sustainability and environmental training along with development for individual professionals and for organisations. We also support and guide the development of policy at Whitehall, EU and UN levels.



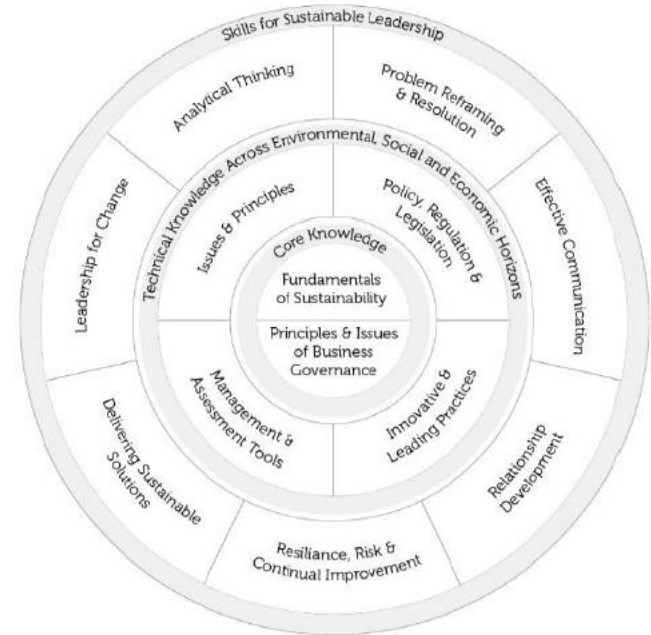
A reminder of the Membership Journey

- 7 different membership grades
- Not a linear route through the grades
- 5 professional levels – all based on the IEMA competency framework

Student	A BROAD HORIZON If your studies relate to environment and sustainability then IEMA offers a bright vision and tremendous possibility.
Affiliate	STAY CONNECTED Affiliate membership gives the wider professional community a way to benefit from the connections IEMA can provide.
Associate	MAKE YOUR MARK There's a whole new world of opportunity for environment and sustainability professionals — and this is your way in.
Graduate	LEADERS OF THE FUTURE We're already looking to the next generation of sustainability professionals. We're looking to you.
Practitioner	TAKING ACTION At the heart of IEMA is a community of professional experts working to make the future better.
Full	THE POWER TO INFLUENCE Lead change in your organisation — with the full force of IEMA behind you.
Fellow	A NEW KIND OF LEADER Join a new generation of ambassadors for sustainability — leaders who are challenging the norms and transforming the world.

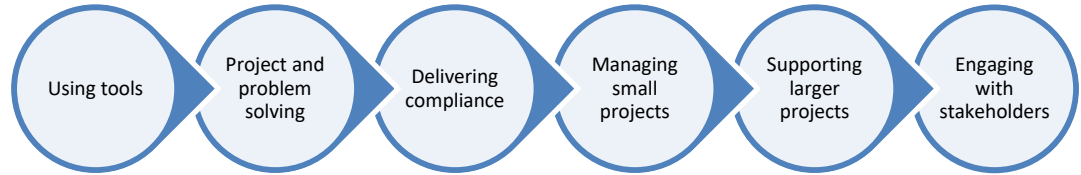
IEMA Competency Framework

- Each professional grade is underpinned by 13 competencies
- **Inner circle** – core knowledge
- **Middle circle** – technical knowledge
- **Outer circle** – Skills for Sustainable Leadership

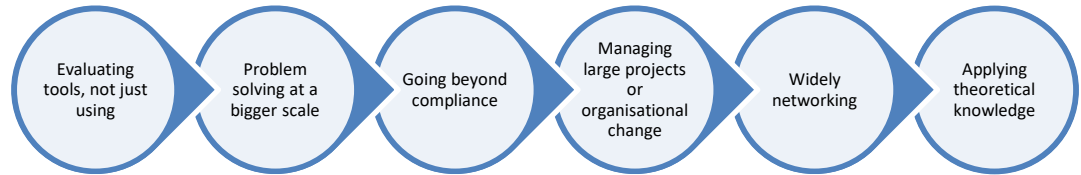


Competencies remain the same – its how you use them...

Practitioner membership (PIEMA)
& REnvP



Full membership (MIEMA)
& CEnv



Why IEMA matters?

Being an IEMA member means:

- Being part of the premier membership organisation for environment and sustainability professionals, tracking a path of training and assessment that allows you to reach your full potential
- Networking opportunities with other professionals through our regional activity
- Access to online content and virtual events
- Updates on all key policy decisions - nationally and internationally
- Helping to shape and build a more sustainable future

Why is IEMA membership important?

For individuals:

- **Badge to doing business** (organisations are increasingly asking for professional membership in job descriptions)
- Enhances career progression
- CPD opportunities to learn, collaborate and share
- Skills aligned an internationally recognised standard

For organisations:

- Builds capability and skills
- Builds resilience
- Supports behavioural change



IEMA Corporate Partnership Programme



Transforming the world
to sustainability

IEMA's Partnership Programmes have been designed to help organisations, of any size, embed environment and sustainability skills and transforming the way you work.

Through a partnership with IEMA, we will help you to develop the skills needed to deliver the systematic changes required for the UK's transition to a net zero economy.



Some of our Private sector partners:

nationalgrid



BAE SYSTEMS



M&S

EST. 1884



SIEMENS



Some of our public sector partners:



Department for
Business, Energy
& Industrial Strategy



Department
for Environment
Food & Rural Affairs



Foreign &
Commonwealth
Office



HM Revenue
& Customs



Ministry
of Justice



Ministry
of Defence



Coventry City Council



Environment
Agency



Natural
Environment
Research Council

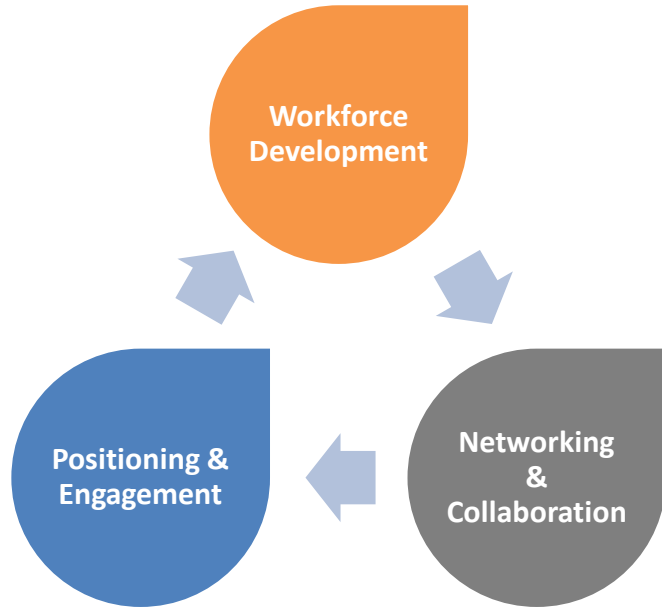


Liverpool University Hospitals
NHS Foundation Trust

Nottinghamshire Healthcare 
NHS Trust

Positive about integrated healthcare

The 3 pillars of corporate partnership...



IEMA supports its corporate partners to:

- Upskill and develop your workforce
- Facilitate cross sector networking and collaboration
- Raise your profile & position as sustainability leaders



Workforce Development

Skills and Workforce Development



Skills gap analysis tool for professional development



Developing and supporting your professional teams



Training Accreditation for wider workforce development

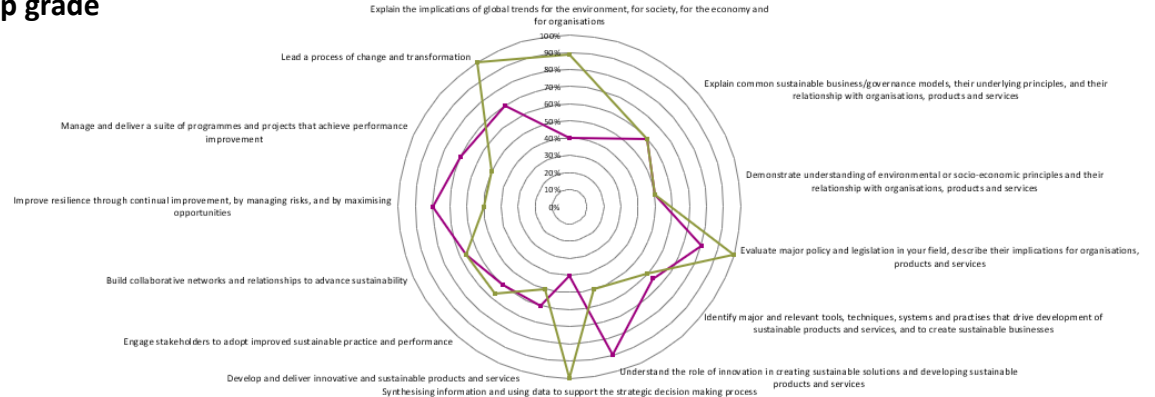


IEMA Skills Gap Analysis Tool

Embed sustainability skills in specific job roles and create professional development plans directly linked to IEMA membership grades

Version of the IEMA skills map for corporate partners.
This allows you to:

- **Benchmark individuals from day 1**
- **Establish appropriate IEMA membership grade**
- **Ensure CPD is appropriate and relevant**





Developing your professionals

A developing suite of tools to support the professional enhancement of people

- **Skills Gap Analysis Toolkit**
- **Membership support tools** – digital content relative to IEMA grades to guide you through the application and upgrade process
- **Live Assessor Q&A** – optional online Q&A sessions with assessors to support professional development.

IEMA Transforming the world
to sustainability

Full Membership (MIEMA)
and
Chartered Environmentalist (CEnv)
Workshop

Carol Brass MIEMA & Cenv Assessor





Training Accreditation

Part of corporate partnership allows you to become an accredited IEMA training centre

This allows you to:

- **Build capability and skills within your organisation**
- **Deliver IEMA Courses to colleagues & to your supply chain** – 1, 2 & 5 Day courses
- **Bespoke IEMA courses to your organisation (70%/30%)**
- **Showcase expertise within the organisation**
- **Apply for IEMA accreditation for your own courses**





Membership Discounts

****25



25% discount on new membership applications AND existing member upgrades

****50



50% discount on new AFFILIATE membership applications



Networking & collaboration



Networking & engagement



**Cross sector corporate
networking**



**Sustainability working
groups – outcome driven**



**IEMA leadership support –
providing an external voice**



Networking & engagement



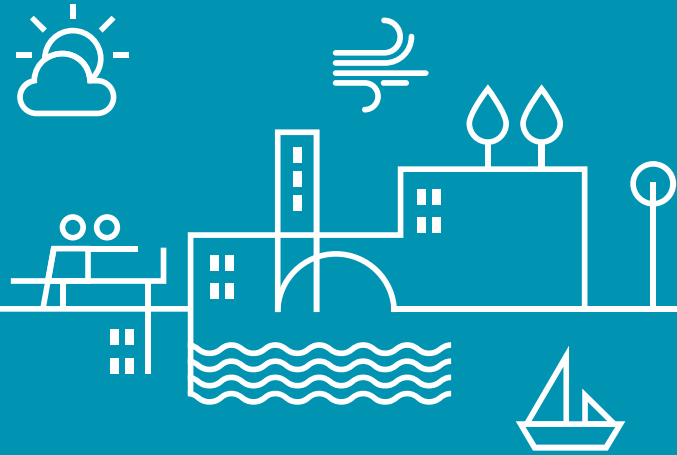
- IEMA Employer Forum – 6 sessions per year
- IEMA Corporate Policy updates – 2 sessions per year
- Lunchtime corporate discussion sessions



- Corporate working parties (Built environment, public sector, food sector etc...)
- Outcome driven objective
- Building resources and practical tools for organisations



- Board level round tables & engagement sessions
- Wider leadership influencing and support
- Engaging with your workforce to support green initiatives



Positioning & Engagement



Positioning & Engagement



**Content generation –
sharing best practice with
others**



**Collaboration with IEMA
members to learn and
develop your strategies**



**Engagement with IEMA
Regional Networks**



Positioning & Engagement



- Creation of case studies
- Creation of blog content for IEMA.NET and Transform
- Sharing of relevant social media posts



- Potential to participate in the IEMA webinar programme



- 15 regional networks
- International IEMA networks – MENA, New Zealand + others
- Chance to showcase your approach, case studies, virtual site visits etc...

IEMA

Transforming the world
to sustainability

Thank you

iema.net

